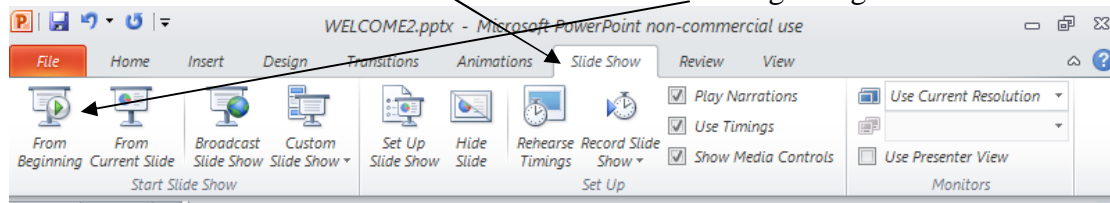


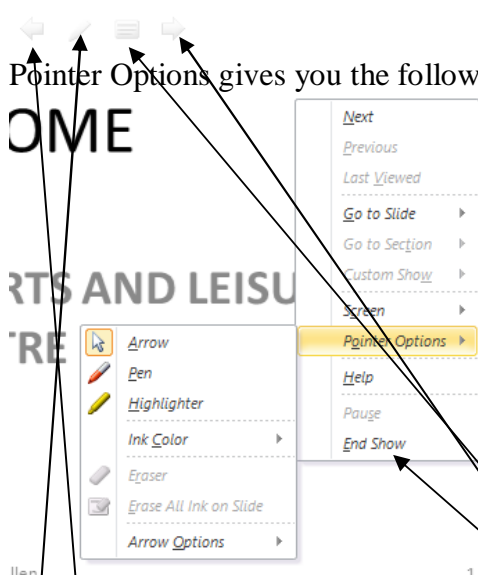
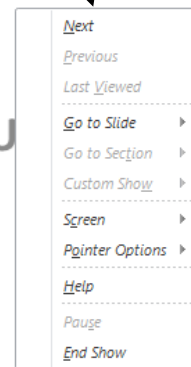
## To run a slide show

In Office 2010 Click the tab Slide Show and click From Beginning



To show the next slide click the mouse.

Alternatively you may Right click and you are presented with the options below.  
 Next gives you thenext slide.  
 Previous the previous slide (greyed out here because this is the first slide)  
 Go to Slide means that you can go to a particular slide number.



Michael Allen

1

Pointer Options gives you the following choices

- Pen means that you can draw round an item to highlight it.
- Highlighter means that you can draw a thick line to highlight a word.
- Arrow Options gives you different types of pointers
- End Show will stop the slide show. Pressing the Esc(Escape) key has the same effect.
- Pause stops the show where you have used timings(see later)

There are also buttons called Media Controls that do the same thing.

- Previous
- Pen
- Menu
- Next

These become coloured when the mouse is above them.